



EDC286

## Product Description

- Small size, supports individual installation (Hole diameter  $\varphi 45\text{mm}$ )
- 5.8G strong anti-interference antenna, can effectively resist wifi, bluetooth and other wireless signal interference
- 12-24V DC input, weak voltage dry contact output
- Integrated light-sensitive
- Can pass the CE\FCC certification

## Electrical Property

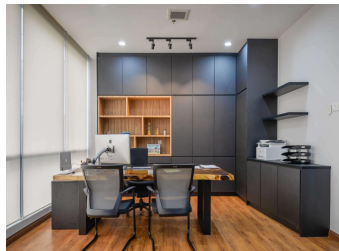
Input Voltage	12-24Vdc
Standby Power Consumption	$\leq 0.5\text{W}$ @24V DC
Output	electrical independent dry contact
Dry Contact Load	36V, 50mA MAX
Transmission Frequency	5.8GHz $\pm$ 75MHz
Transmission Power	11~13dBm
3db beam angle	90° (XZ quadrant) 90° (YZ quadrant)
Sensing range	3-4m
Delay	5s~30min (adjustable via remote control)
Operating temperature	-30... + 60°C
Storage temperature	-35... + 85°C

### Remarks:

- 1、 The test range is based on the sensor hanging height of 3m and indoor testing environment .the test personnel height 170cm, weight 65-75kg and walks at a speed of 1m / s (1 second 2 steps). Different application scenarios may cause changes in the range, which should be subject to the actual test.
- 2、 Due to the spectral characteristics of the photosensitive device, the threshold is uniformly tested under natural light conditions;
- 3、 Customer can set the delay time by remote control according to actual demand, delay tolerance is  $\pm 10\%$ .

## Typical Application Products

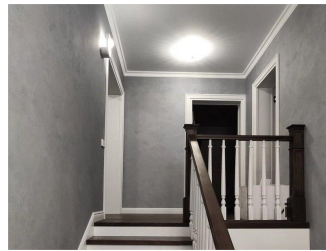
### Ceiling mounted scenario



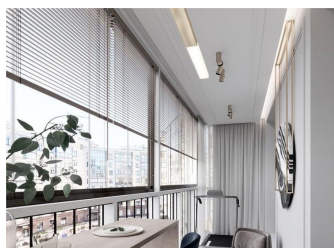
Office



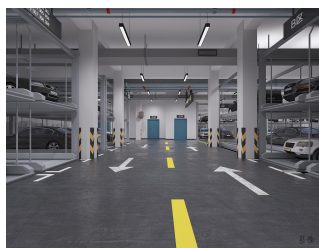
Porch



Stairs



Balcony



Basement

## Indication Status

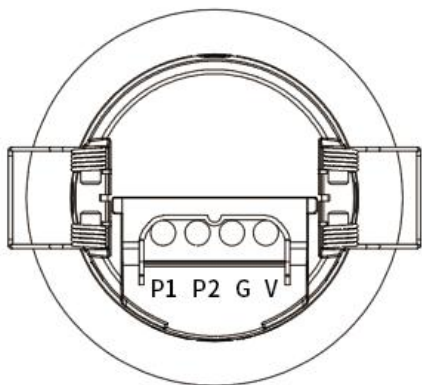
1、 Initialization:power-on—— the dry contact is closed——light turns on—— the LED indicator turns on

After initialization:the LED indicator turns off——latch up lasts 2s——the dry contact is disconnected.

2、 Working mode: If a person is detected, the LED indicator flashes once, at this time the dry contact is closed and the light is on. If the time delay has passed and no person is detected, the dry contact is disconnected and the light is off.

Note: When the motion is triggered multiple times within 5 seconds, the indicator light flashes only once

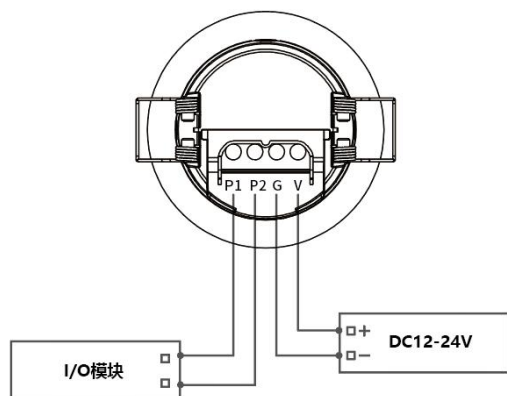
## Wiring Introduction



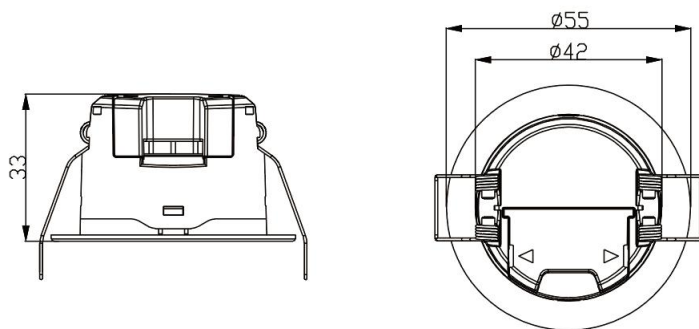
### EDC286 Wiring introduction

PIN	Description
P1	Dry Contact (Non-polar)
P2	
G	GND
V	DC 12-24V power supply

## Wiring Diagram

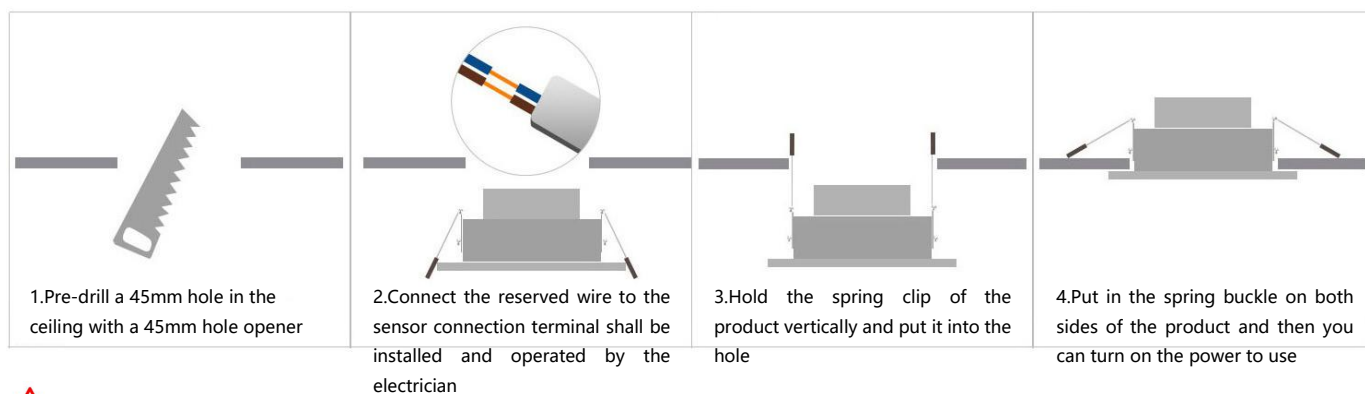


## Product Dimension



EDC286 Product dimensional drawing. Unit:(mm)

## Installation instruction

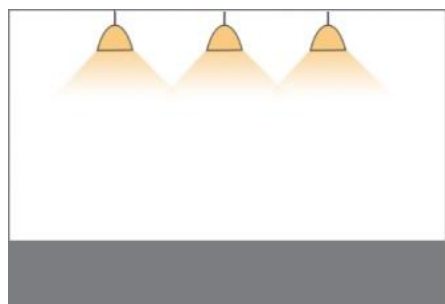


**⚠ Caution: Power supply must be turned off before installing or removing.**

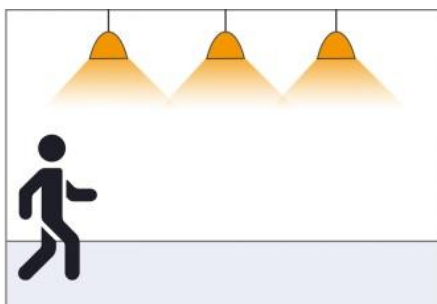
## Packaging Information

Supported packaging:  Blister packaging  Bubble bag packaging  PE bag

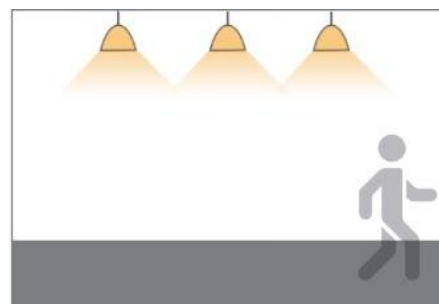
## Function Introduction



No moving objects detected,  
luminaire goes to off state



When the sensor detects a moving object, the light will automatically turn on and enter the set delay time, if the human body movement is detected the delay time will be postponed.



After the delay time it returns to the off state when the sensor does not detect a moving object.

## Attentions

- 1, When installed, the distance between exhaust fan and air conditioning vents shall more than 50cm. Vibration generated by exhaust fans, air conditioning vents and other equipment work create false triggers. Installation also needs to avoid areas where there are vibrations caused by the activities of people or objects in the outside world.
- 2, The product has better penetration effect on plastic and wood than metal. Avoiding metal covering in front of the antenna, the metal will reflect the microwave and affect the actual sensing effect;  
Area metal, which reflects microwaves and may cause the sensor to self-trigger;
- 3, Within the sensor detection range, when the decorative surface has a large area of glass and smooth ceramic tile, the electromagnetic wave reflection will be strengthened, and should be appropriately adjusted according to the size of the space.
- 4, The distance between multiple sensors in the same site application should be greater than 2.5m. Too close installation distance may false trigger some cycle.
- 5, Microwave sensors emit electromagnetic waves in the actual application of the environment, the reflectivity of the obstacles will bring different sensing range , which is a normal phenomenon; For example, in a hallway and a wide room, the sensing distance will be slightly different.
- 6, Product specifications, parameters may be upgraded version without prior notice.

## Product Naming Rules

ED	Frequency	Product	Segment	Product	Feature	Delay	Serial
ED	Band	Categories	Categories	Number	-	Y	Number
	C	2	8	6			01
	<input type="checkbox"/> S 3GHz	<input type="checkbox"/> 1 Microwave sensor	<input type="checkbox"/> 0 Ultra Low Power Series	0-9 A-Z	<input type="checkbox"/> A VOG (default)	<input checked="" type="checkbox"/> Y With photosensitive	
	<input type="checkbox"/> F 6GHz	<input checked="" type="checkbox"/> 2 Microwave switch	<input type="checkbox"/> 1 Flagship Series		<input type="checkbox"/> B VGO	<input type="checkbox"/> N Without photosensitive	
	<input checked="" type="checkbox"/> C 5.8GHz	<input type="checkbox"/> 3 Radar antenna	<input type="checkbox"/> 2 Short distance series			<input type="checkbox"/> P Programmable	
	<input type="checkbox"/> Q 24GHz	<input type="checkbox"/> 4 MCU	<input type="checkbox"/> 3 Adjustable series				
	<input type="checkbox"/> V 60GHz	<input type="checkbox"/> 5 Microwave power supply	<input type="checkbox"/> 4 External Antenna Series				
	<input type="checkbox"/> W 77GHz	<input type="checkbox"/> 6 IC	<input type="checkbox"/> 5 General series				
	<input type="checkbox"/> X 10.5GHz	<input type="checkbox"/> 7 other	<input type="checkbox"/> 6 To be defined				
		<input type="checkbox"/> 8 Networking	<input type="checkbox"/> 7 To be defined				
			<input checked="" type="checkbox"/> 8 Basic Series				
			<input type="checkbox"/> 9 High Altitude Series				

## Configuration Version Description

<p>【Hardware】 :</p> <p>【Software】 :</p>
---

## Historical Revision Record

Edition	Time	Description	Remarks
V1.0	2023-10-23	First edition	-