



www.siqitech.com

C1 4 Button Switch

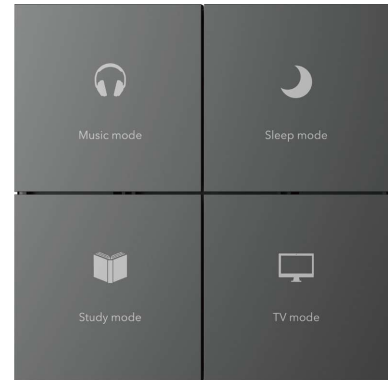
SC1PN104

Easy to use

C1 4 button switch is a classic and practical product, which can be used as an ordinary switch for light on-off control. It is also possible to control lights or groups of lights with one click through user customized scenes.

Highly customizable

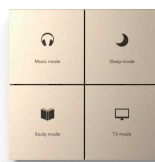
The C1 4 button switch gives direct access to all the important Casambi lighting control functionalities. The preset buttons of C1 4 button switch can be configured via the Casambi App.



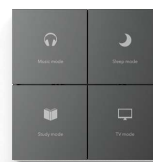
COLOR



White
PC



Gold
PC



Grey
PC



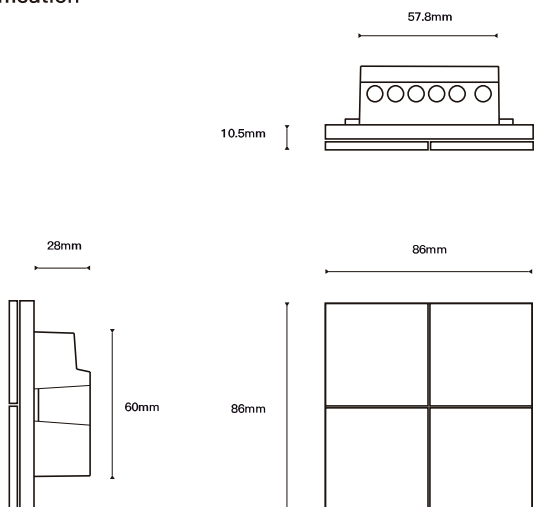
Black
PC

TECHNICAL PARAMETER

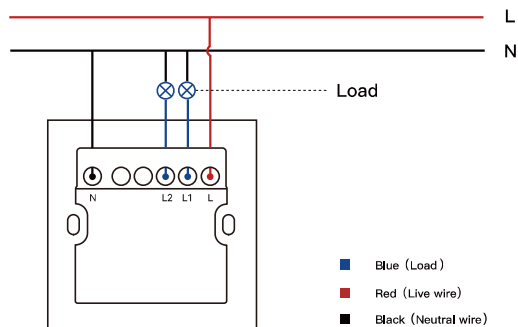
Product size	86 x 86 x 10.5
Bottom shell depth	28mm
Package size	100 x 100 x 60 mm
Weight	0.13 kg
Gross weight	0.18 kg
Installation mode	86 Mounting box depth: >50mm

Input voltage	110-240VAC 50/60Hz
Network mode	Bluetooth Casambi
Material	PC
Fire rating	94-v0
Working temperature	-10°C~+60°C
Working humidity	≤95%RH, Non-condensing

Size Specification



Wiring Instruction

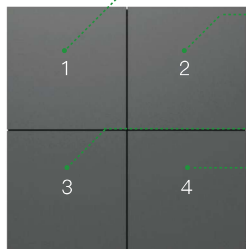
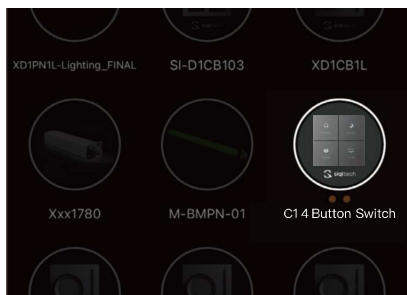


Button Settings Instruction

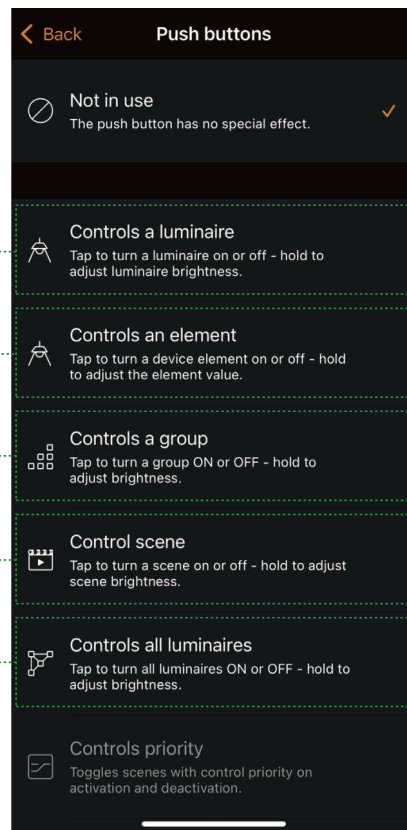
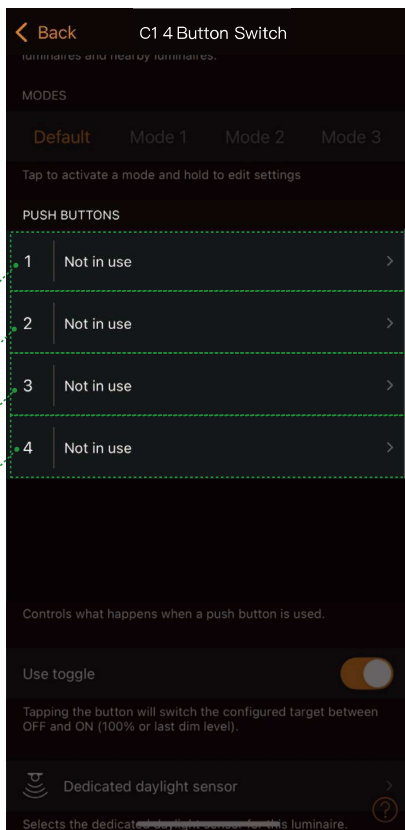
Double – click the device to enter the editing page.

Select the button that needs to be edited.

The button can be bound to the following functions.



The buttons corresponding to the APP.



The preset buttons of C1 4 button switch can be configured via the Casambi app. A light indicates the selected preset.

FUNCTION A

Preset buttons:

- Individual luminaire control
- Group control
- Control of all luminaires
- Recall scenes
- Recall animations



FUNCTION B

Push Buttons

- The switch can support up to 4 push buttons. This could be useful for example if there is a need to be able to a luminaire on/off, dim it and also change the colour temperature. In the default mode, briefly pressing a push button can turn a luminaire on/off and holding the push button down will dim the luminaire.

Relay

- Up to 2 relays will provide on/off circuit breaker function

